



Promoting Cooperative Solutions for Space Sustainability

Realizing Value: Steps Beyond Geospatial Information Access

Laura Delgado López
Project Manager

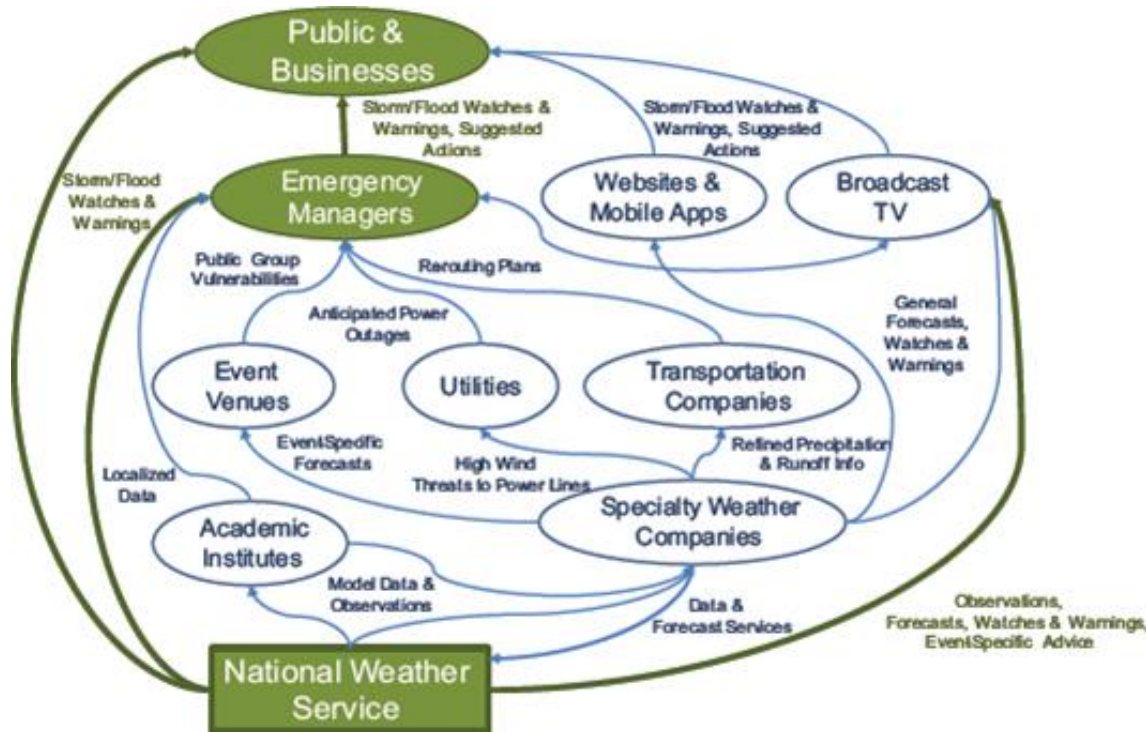
©2013 Secure World Foundation. Used with Permission

- SWF is a private, endowed operating foundation dedicated to the secure and sustainable use of space
- *Why space sustainability?* Increasing reliance on space assets coupled with potentially destabilizing trends
- SWF Human and Environmental Security Initiative
 - Awareness and Capacity building
 - Research and Analysis
 - Forums and Dialogues

Clockwise: Screenshot from Stuffinspace.net; cover of Apogeo Spatial spring issue; expert panel at SWF's "Space and the Arctic" event.



- Early recognition of link between accessibility of public data and societal benefit, scientific progress, and **commercial exploitation**
- Definition of role of government in information value chain – example: U.S. Weather Enterprise



- Open access data policies now even more common
- Assumption that accessibility = realizing value

Left: Hypothetical figure of information value chain in U.S. weather enterprise. Credit: "4 Leverage the Entire Enterprise." Weather Services for the Nation: Becoming Second to None. Washington, DC: The National Academies Press, 2012."

Focus on Disaster Risk Management

Forecasting

Data Access Policy

*Data Access
Mechanisms*

*Technical Capacity
Building*

*Decision Maker
Awareness*

*Best Practices
Exchange*

Risk Communication

*Academia-Industry-
Government
Collaboration*

*Research To
Operations*

Innovation

*Value-Added
Products*

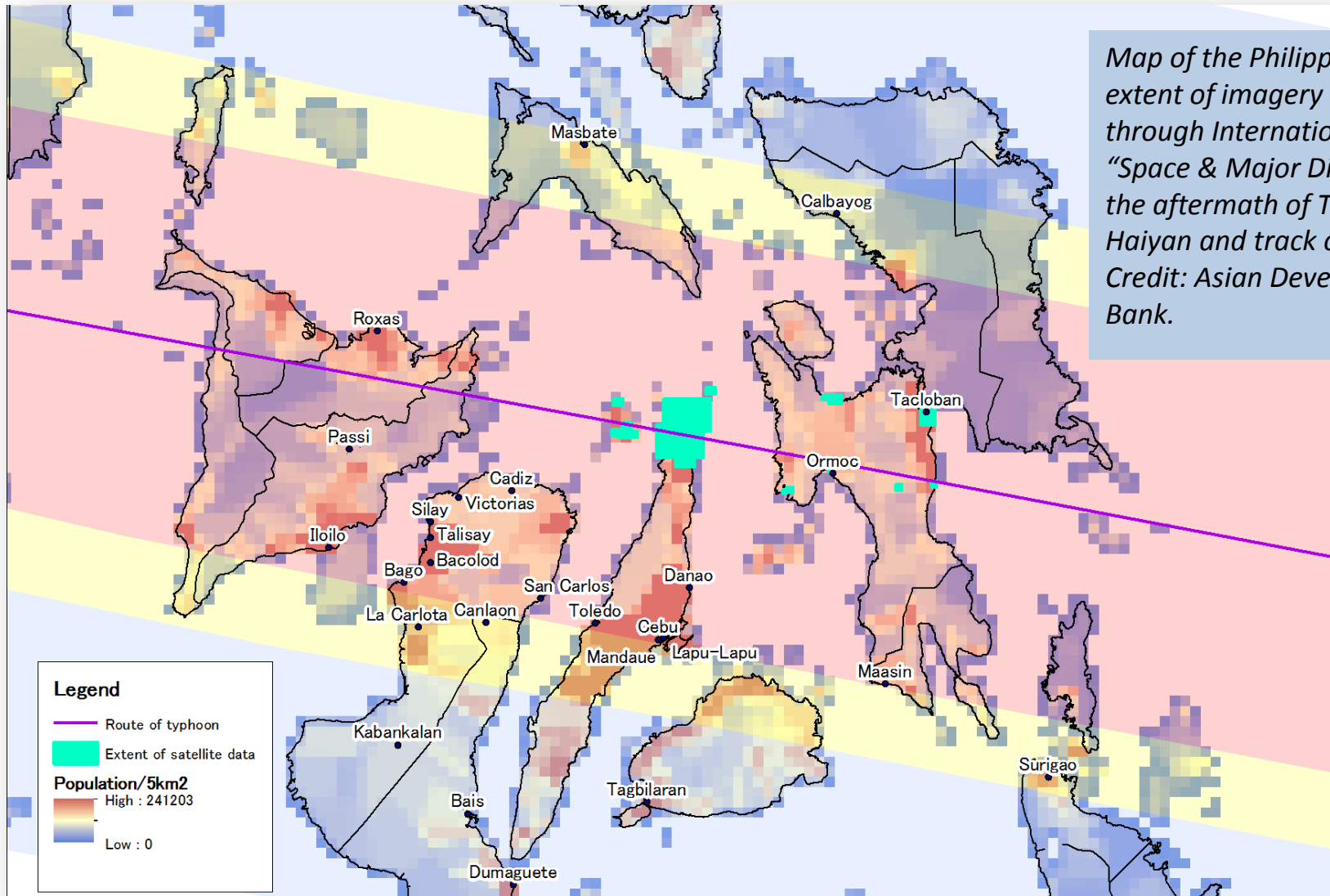
Observations

Crowdsourcing



Persisting Challenges: (1) Access is limited

Promoting Cooperative Solutions for Space Sustainability



Map of the Philippines showing extent of imagery available through International Charter "Space & Major Disasters" in the aftermath of Typhoon Haiyan and track of the storm. Credit: Asian Development Bank.

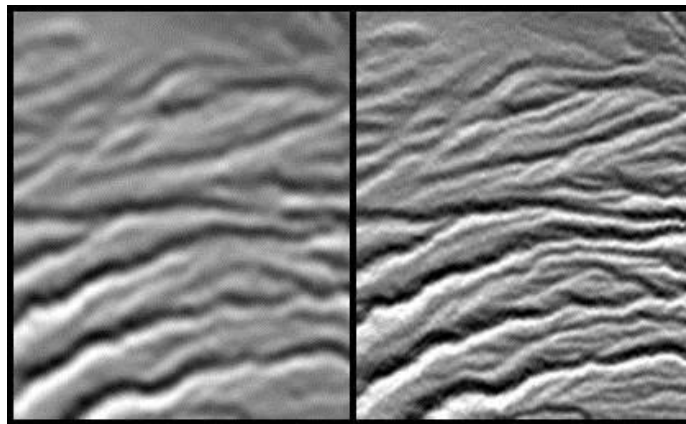
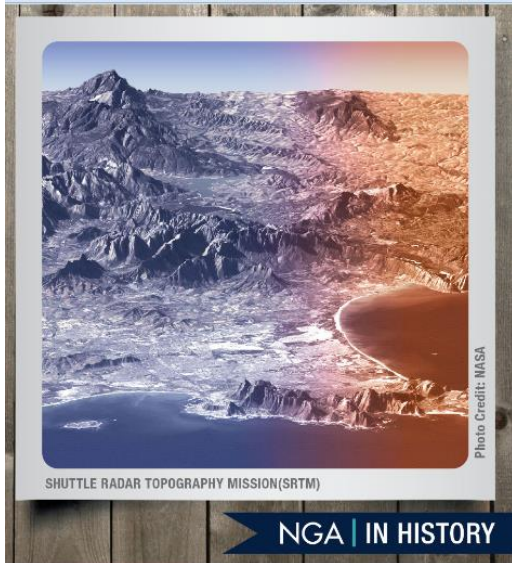
(2) Access is sometimes unclear

“While the debates on open data and the diverse policy and legal documents on the subject widely employ *the terms free, full and open, these terms are not always used in a consistent manner.*”

Harris, R. and Baumann, I. (May 2015) Open data sources and satellite Earth observation.

Space Policy (32), pp 44-53.

The release of certain datasets may not be immediate, may undergo review of access limitations or reusability restrictions.

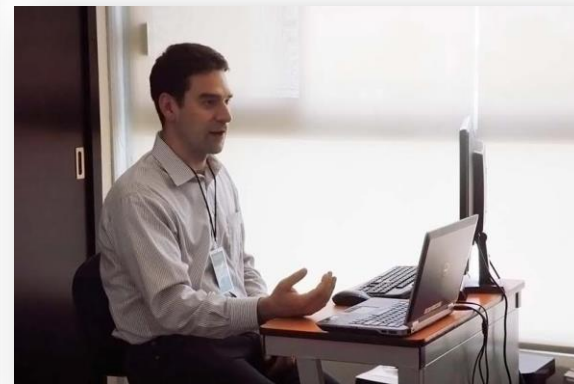


Left image credit: NASA.

Right image caption:

Comparison of 90-meter and 30-meter SRTM digital elevation model data of a site in the Crater Highlands of Tanzania. Credit: NASA/JPL-Caltech/NGA.

(3) Access is not enough



Pictures from 2015 SRTM-2 capacity-building workshops organized by the CEOS WGCapD with local and international partners, including SWF.

Moving Forward

THE GLOBAL EARTH OBSERVATION SYSTEM OF SYSTEMS



- Realizing **full** value will require continual examination of problem of “access” and beyond
- Potential exists for new partnerships between industry and NMAs to address national-level challenges
- Issues will become more salient as technology continues evolving and demand from new user groups grows



Promoting Cooperative Solutions for Space Sustainability

THANK YOU

ldelgado@swfound.org