

UN-SPIDER Expert Meeting

"Crowdsource Mapping for Disaster Risk Management and Emergency Response"

Organized by the

United Nations Office for Outer Space Affairs

with the support of and in cooperation with

The Government of Austria

and

Secure World Foundation

Vienna, 3rd – 5th December 2012

LIST OF PARTICIPANTS

ALHAJRI Rashid Mohamed

ALMOHANNADI Rashid Ali

ANANGWE Byron

ANDRADE Elias

Student

University of Vienna – Erasmus Mundus

deandrade.elias@yahoo.com



Elias has obtained a collection of university degrees, coordinated charity work, and participated at official UN activities in different countries aiming to build an international character. The highlights of Elias' professional experience have been an internship at the headquarters of Amsted Headquarters, Chicago, USA, and another internship at the United Nations Office for Outer Space Affairs, Vienna, Austria.

ANTONIOU Natassa

Project Manager

Secure World Foundation (SWF)

nantoniou@swfound.org



Natassa Antoniou is a Project Manager for Secure World Foundation. She is based in Brussels where she supports and oversees projects dealing with space policy and human and environmental security issues. She has been active in the European and international policy environment for the past six years and brings to SWF a diverse range of experience, both academic and administrative.

BABAYEMI Oludotum

Systems Analyst

Cloneshouse Nigeria

oludotunbabayemi@cloneshouse.com



"This is the beginning of a new era, and hope developing countries will use these technologies to kick-start a new path to a sustainable future."

BAKER Robert Renwick

BALZANI DO NASCIMENTO GODINHO Ricardo

ricardo.balzani@cemaden.gov.br

Research Associate of the Brazilian Centre for Monitoring and Warnings of Natural Disasters. (CEMADEN).



BASTIDE Frederic

BECKEL Lothar

BHADURI Budhendra

BOIS Christophe

CHAPMAN Kath

Executive Director

Humanitarian OpenStreetMap Team

kate.chapman@hotosm.org



Her most recent work has been in Indonesia working on a pilot program over the past year analyzing the feasibility utilizing OpenStreetMap for collection of exposure data. This project has hosted a OpenStreetMap mapping competition, a month long event to map critical infrastructure in Jakarta and assisting community facilitators in moving from hand-drawn maps to digital maps. Key to this program has been availability of high resolution satellite information for digitizing of infrastructure information.

COLLISON Michael

CRACIUNESCU Vasile

Researcher

Romanian National Meteorological Administration

Remote Sensing and GIS Laboratory

vasile.craciunescu@meteoromania.ro



“Researcher and FOSS4G promoter, in charge of the activities in Meteo Romania related to rapid mapping, air quality data integration, spatial data infrastructure and web mapping.”

CROWLEY John Raymond

DAVISON Rachael

EHN Christian

EMILSSON Johan

Intelligence analyst

GWS Global Warning System

johan.emilsson@globalwarningsystem.com



Johan Emilsson has an MSc in cognitive science, BSc in experimental psychology and is currently completing a BSc in intelligence analysis at Lund University. Emilsson is experienced in intelligence analyses and geographical information system (GIS). An ongoing research project at Lund University involves localization and categorizing of all top level trauma hospitals in the world. Prior research

project involved using an artificial neural network to decode and classify EEG activity.

ENENKEL Markus

Vienna University of Technology
Department of Geodesy and Geoinformation (GEO)
Research Group Remote Sensing
me@ipf.tuwien.ac.at



Markus Enenkel earned a BSc of Environmental Sciences and a Joint MSc Degree in Natural Resource Management and Economic Engineering at the University of Natural Resources and Applied Life Sciences (Vienna, Austria) and at Lincoln University (Christchurch, New Zealand). He gained experience as a researcher in the GMES-service GLOWASIS (Global Water Scarcity Information Service). Further activities involved lectures at different international conferences or workshops (e.g. EUMETSAT or ISPRS). His research focus is on EO data for improved drought management. Since October 2010 he is researcher at the Department of Geodesy and Remote Sensing. He gained experience as research scientist in the GMES (Global Monitoring for Environment and Security)-service GLOWASIS (Global Water Scarcity Information Service).

FRITZ Steffen

Researcher
IIASA
fritz@iiasa.ac.at



“The potential of crowdsourcing is tremendous; let's get the right tools to make use of this.”

FROEHLICH Arnette

FUERENDER Petra

GAHGAH Mohammed

GARTNER Georg

GENNAI Emanuele

Global Affairs Account Executive

ESRI

egennai@esri.com



HAVLIK Denis

HINTERHOLZER Michaela

ISHII Kunihiro

Senior Engineer

KOKUSAI KOGYO CO.,LTD

kunihiro_ishii@kk-grp.jp



Working Experience:

2000 - Present : Planning and design for Database and Information system of GIS related fields.

1996 - 2000 : Geological field survey and GIS analysis including response to disasters.

JONES Nadine Andrea

KERLE Norman

KLUCKNER Sigmund

KNAUER Anne

KREBS Roland

KRISTOF Daniel

KRUK Lukasz

IT Team Leader/Web Content Manager
Shelter Centre

lukasz.kruk@gmail.com

MSc degrees in Geography and in Geospatial Technologies, with special interest in Spatial Analysis. Currently at Geneva's Shelter Centre as IT Team Leader and about to relocate to Amman to support REACH GIS programme. Member of SBTF.



LENG David

Director
HEAL

heal.ltd@gmail.com

“New Generation Emergency Response Systems Vampire...Willing to absorb the knowledge out of this meeting and apply to what we're developing in the South Pacific.”



LESON Heather

Director of Community Engagement
Ushahidi

hleson@ushahidi.com

Heather Leson is Ushahidi's Director of Community Engagement, a role in which she exercises her passion for community-building, storytelling, and idea hacking. Uniting people with maps and technology for social good inspires her in all that she endeavours. (More details about her work and education experience can be found on her blog: <http://textontechs.com/bio/>)



LI Suju

Senior Expert

UNOOSA / UN-SPIDER

suju.li@unoosa.org



LIEHR Clemens

Project manager

Riocom - Consulting Engineers for Water Management and Environment

clemens.liehr@riocom.at



Current Occupation: riocom - Consulting Engineers for Water Management and Environmental Engineering, RIVERGATE – Handelskai 92, A-1200 Vienna (www.riocom.at)

Academic Education: Master degree in Landscape Planning in 2006, University of Natural Resources and Life Sciences, Vienna

Main areas of interest: natural hazards, disaster management, contingency planning

Selection of ongoing or recently completed projects relevant to the current proposal:

- MONITOR II – Practical use of monitoring in disaster management
- ORESP – Organizational Response to Heat Waves (06/2010-08/2011)
- SEHC – Securing Extramural Health Care (01/2008-12/2009)

LINDSAY Francis

LLOYD Matthew

Manager

New Zealand Red Cross National Office

matthew.lloyd@redcross.org.nz

Matthew was an officer in the Royal Navy. He moved to New Zealand where he ran field communications for the Department of Conservation. was recruited by New Zealand Red Cross to apply his theoretical and practical knowledge to solve the communications problems of Red Cross societies in the South Pacific. When not designing gadgets Matthew is the manager of the NZRC IT & Telecoms Emergency Response Unit.



LOIZMAYR Stefan

Österreichisches Rotes Kreuz Landesverband Oberösterreich
stefan.loizmayer@gmx.at

Stefan Loizmayer works since 2006 for the FerRobotics Compliant Robot Technology GmbH Linz (Austria) as Safety Engineer / Risk Manager.



LOSMANOVA Simona

GMES Specialist
Czech Environmental Information Agency (CENIA)
simona.losmanova@cenia.cz

Graduated in 2003 as a civil engineer, obtained Ph.D. in 2007. Knowledge deepen in the environmental sector with focus on remote sensing and in-situ data used for the European programme Global monitoring for environment and security (GMES)



LUKASZCZYK Agnieszka

Brussels Office Director
Secure World Foundation (SWF)
alukaszczyk@swfound.org



MACKINNON Justine

MAMAIS Eleftherios

Lead Consultant
SpaceTec Partners
mamais@spacetecpartners.eu

Eleftherios Mamais, Lead Consultant at SpaceTec Partners. Eleftherios holds a Master's of Science in Physics from the honours programme of the University of Bonn. Before joining SpaceTec Partners, he worked at the Galileo Unit of the EC's DG ENTR. He has developed an excellent knowledge of the SatNav downstream applications sector from his involvement in the Galileo Commercial Service working group and through his role as the Project Manager of GNSS.asia (EU-Asia industrial cooperation in downstream apps). He is the lead author of the GMES Emergency Management Service User Guide. Eleftherios is the lead contributor of the



3ISACROWD proposal on “Integrating satellite technologies and crowdsourcing for emergency response operations, early warning and disaster management”. He attended the ESA International SatNav Summer School in July of 2012. He is fluent in English, German and Greek.

MAZET Gilles

EMSC

mazet@emsc-csem.org



Gilles Mazet-Roux is a seismologist and has been in charge of the real time earthquake information services since 2001 at the EMSC. This encompasses the maintenance and development of applications and softwares for data acquisition/processing as well as services for rapid information on the recent seismic activity. Part of his activity also concerns scientific programming for data analysis and participation to international scientific meetings. The European Mediterranean Seismological (EMSC, www.emsc-csem.org), a scientific NGO operates the second global earthquake information in the world and focuses on improving rapid earthquake information and harnessing the collective power of citizens to rapidly constrain earthquakes' impact through Internet and mobile applications. Those ideas lead to the concept of citizen seismology, merging crowdsourcing tools, flash-sourcing -an innovative approach based on real time analysis of web traffic-, the use of social media, educational activities, seismological data, and soon a citizenoperated seismic network. EMSC was awarded in 2007 the IRIS prize for innovative risk education and risk awareness initiatives.

MCCALLUM Ian

Researcher

IIASA

mccallum@iiasa.ac.at



"Looking forward to an exciting meeting on crowdsourcing: an area only now making inroads into science."

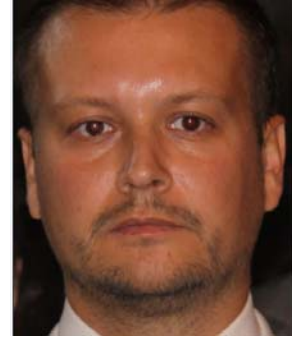
MCLAREN Robin

MOHAMED Mohamed

MOISE Cristian

Research scientist
Romanian Space Agency (ROSA)
cristian.moise@rosa.ro

Cristian Moise works for eight years ago with ROSA and in the present he holds the post of Research scientist at the Space Applications Department.



NEME-LOZANO Javier

O'HARE Peter

OLOUKOI Joseph

PARSONS Ed

Geospatial Technologist
Google
eparsons@google.com



PERONI Guido

POLANSKI Philipp

POTAVOV George

SALMA Slavo

SCHELHORN Svend-Jonas

SCHIMAK Gerald

SHANLEY Lea Anne

SHIELDS RECASS Josephine

SINGHAWICHAJ Adthaporn

SPRUYT Peter

European Commission
DG -Joint Research Centre (JRC)
Institute to the Protection and Security of the Citizen (IPSC)
Global Security and Crisis Management Unit
peter.spruyt@jrc.ec.europa.eu



Born in Belgium (Gent) on 26/02/1964.

I Worked for the Flemish Land society as a photogrammetrist/Land surveyor from 1987 until 1997. Since 1997 I am working for the European Commission (DG JRC) as a Scientific /Technical Project officer and active in supporting and contributing scientific and technical tasks within the Geospatial emergency management action and related competitive projects of the Unit 'Global Security and Crisis Management'.

SUDHOFF Sandra

TAUBENBOECK Hannes

THILL Wolfgang

TSUBAKI Rina

TURK Catherine

VANDER WILT Nathaniel Douglas

VERITY Andrej

VYE-BROWN Charlotte

Volcanologist
British Geological Survey
cvye@bgs.ac.uk



Charlotte Vye-Brown is a volcanologist working for the British Geological Survey. She is predominantly a field geologist and uses multiple techniques including satellite and aerial data to understand past volcanic history and monitor modern activity. She is involved with planning and response in the UK for impacts from volcanic eruptions and uses citizen science to assist in close to real-time data collection.

WAGNER Ruediger

YANN Rebois

GIS technician

International Committee of the Red Cross Geneva (ICRC)

yrebois@icrc.org

“Peu importe a la vitesse ou tu avances du moment que tu ne t'arretes pas.”



ZAINADINE Arafat

ZEGRAR Ahmed

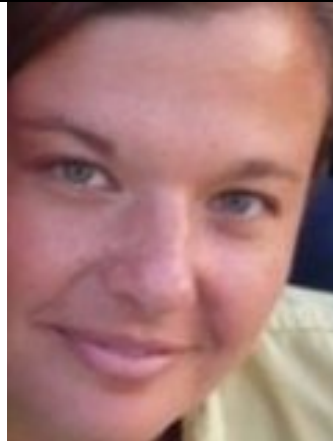
ZIEMKE Jennifer Joyce

Co-Founder & Co-Curator

International Network of Crisis Mappers

jen@crisismappers.net

“The International Network of Crisis Mappers is the largest and most active international community engaged at the intersection between humanitarian crises, technology and crisis mapping. Crisis Mappers leverage mobile platforms, computational and statistical models, geospatial technologies, and visual analytics to power effective early warning for rapid response to complex humanitarian emergencies.”



FAVA Paola

Cooperazione Internazionale

COOPI

innovation_malawi@coopi.org

“Communities have knowledge, we have know-how: let's combine resources.”



Stowasser Rainer

Mayer Stephan

